

abbotFox
Bespoke.



Hurn Road

Drayton, NR8

"An impressive 1950s detached home set on one of Drayton's most sought-after roads. Handsome, refined, and full of original character, this substantial family residence offers an exceptional balance of period elegance and space all within a generous plot of around 0.75 acres."

From our agent





A Distinguished 1950s Home

The property retains much of its original 1950s character, including stained glass windows and beautifully preserved Japanese oak parquet flooring. The property has been thoughtfully maintained and extended over time, remaining in exceptional condition throughout, though now offering scope for sympathetic updating to suit modern tastes.

A grand reception hall provides an impressive arrival, its original staircase and flooring setting the tone for the rest of the home. The ground floor unfolds through a series of elegant reception spaces — a large sitting room, a garden room and a formal dining room ideal for entertaining.

A spacious kitchen and breakfast room, open-plan with a comfortable family area, form the heart of the home. Practical additions include a utility room and a ground floor wet room, with the property also benefiting from a relatively new central heating system.

Family Living on a Grand Scale

The first floor continues to impress, featuring four bedrooms that enjoy views across the gardens and treetops of Hurn Road. A family bathroom and separate WC serve the floor, while the layout offers ample scope for reconfiguration or further enhancement if desired. Obvious areas to extend would be above the double garage or by way of a loft conversion (stpp).

Gardens and Grounds

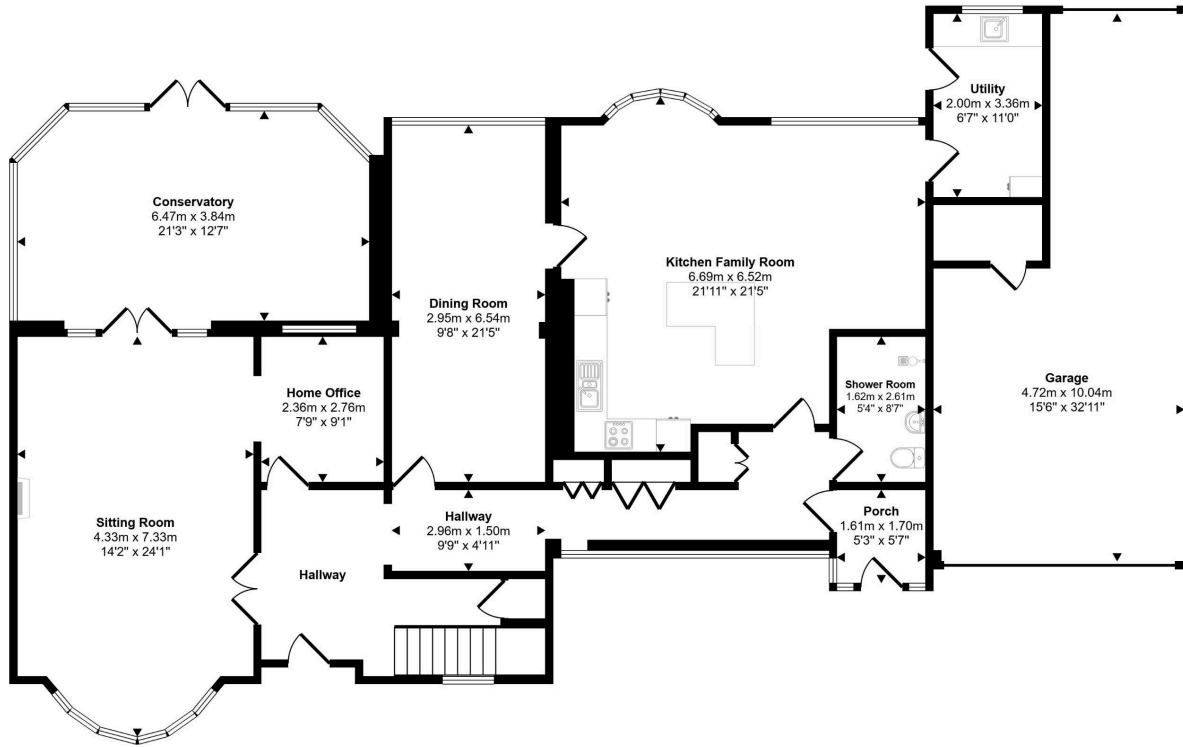
Set within approximately 0.75 acres (stms), the private grounds are a defining feature of the property. A sweeping driveway provides a grand approach and ample parking, leading to a 2.5 garage, part tandem offering excellent space for storage or hobby use.

The mature gardens offer a tranquil outdoor retreat, ideal for those seeking both privacy and space in a highly desirable setting.

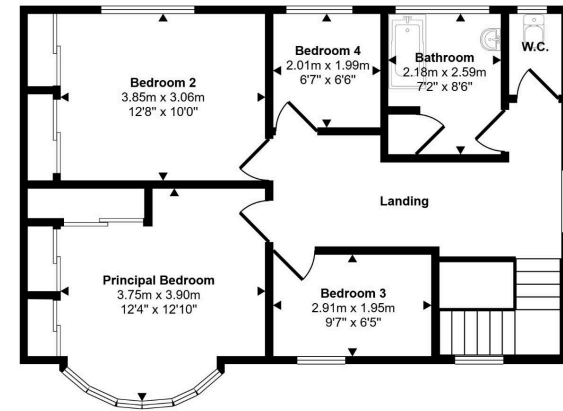




Approx Gross Internal Area
269 sq m / 2895 sq ft



Ground Floor
Approx 205 sq m / 2203 sq ft



First Floor
Approx 64 sq m / 692 sq ft

This floorplan is only for illustrative purposes and is not to scale. Measurements of rooms, doors, windows, and any items are approximate and no responsibility is taken for any error, omission or mis-statement. Icons of items such as bathroom suites are representations only and may not look like the real items. Made with Made Snappy 360.



Location

Hurn Road is widely regarded as one of Drayton's finest addresses a peaceful, tree-lined road of individual homes, each set within generous plots. The location offers the perfect balance of village community and convenience, with local amenities, cafés, and schools all within easy reach.

Drayton itself is a thriving and well-connected village, offering a strong community atmosphere, while nearby Norwich provides a wealth of cultural, shopping and dining options. Excellent road links and public transport connections make commuting straightforward, with Norwich International Airport and the city's mainline railway station both close at hand.

The area is also well served by schooling, with a choice of highly regarded state and independent options nearby.





Our Agent's View

"A rare opportunity to acquire a property of genuine character and presence on one of Norwich's most prestigious residential roads. With its impressive plot, elegant proportions, and exciting potential, it offers a wonderful canvas for a discerning buyer to create their ideal family home."

Samuel Le Good | Partner



abbotFox
Bespoke.



Agent's Details



Samuel Le Good | Partner

samuellgood@abbotfox.co.uk | 01603 660000 | 07915 660981 | @samuellgood

Kingsley House
2a Upper King Street
Norwich
NR3 1AH



Disclaimer - In accordance with the Property Mis-descriptions Act, the company gives notice that all descriptions, references to condition, necessary permissions for use and other details are given in good faith and believed to be correct, but any intending lessees do not rely on them statements of fact, but must satisfy themselves by inspection or other means, as to their accuracy